

SOUND OUTPUT

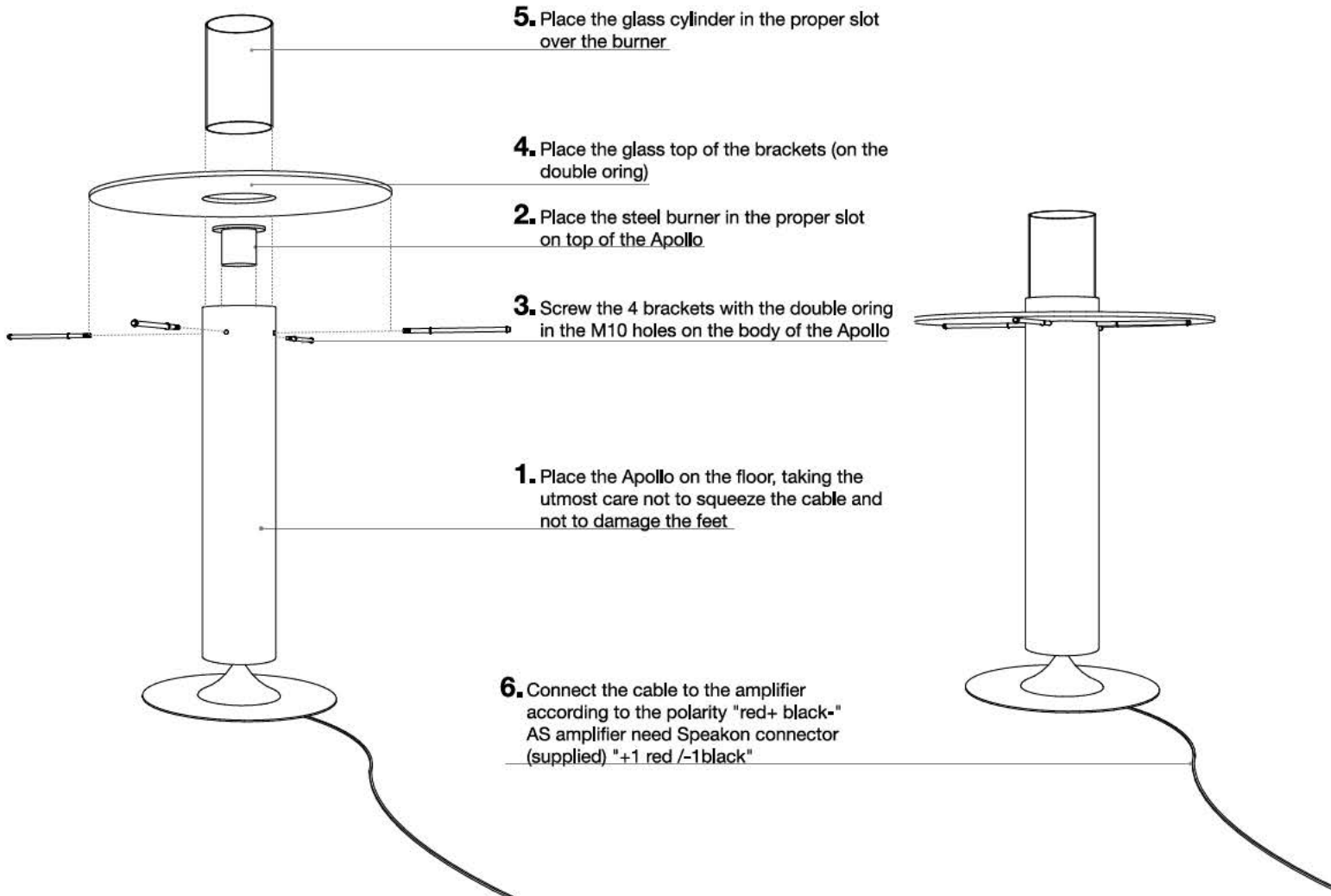
- Speaker type**
6" dual-concentric speaker
- Nominal impedance**
8 Ω
- Crossover**
two way on board
- Frequency range**
55-20.000 Hz (-6dB)
- Sensitivity (1W-1m)**
89 dB
- Speaker Max Power**
300W
- Speaker RMS Power**
150W
- Recommended amplifier power**
200W (Class D)

SPECIFICATIONS

- Material**
Painted steel (black or white)
Smoked glass
- Base material**
steel
- Dimensions**
 \varnothing 900 x 1370 mm
- Weight**
35 kg

Apollo is an indoor and outdoor bioethanol fireplace. With a base designed to propagate sound, it is an omnidirectional sound diffuser that creates a warm and pleasant atmosphere of comfort and relaxation. Suitable for any gathering venue.

Mounting instructions: Apollo sound module can be installed either indoor and outdoor. Once you have selected the mounting position best suited for the sonic fireplace, proceed carefully. Mount the module securely and it is heavy and fragile and damage to the product and/or injury could result from improper mounting. Please follow the instructions below carefully.



Bioethanol fireplace

general informations:

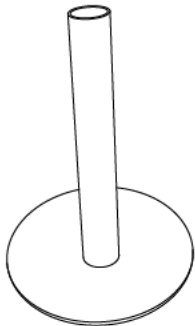
Bioethanol fireplaces are created to allow everyone to enjoy the beauty of the fire. The innovation of these products is the way they operate: a simple system that does not require specialists for the installation and the need for electrical connections or gas pipes, making the fireplace suitable for every place. The products of combustion are heat, steam and every low percentage of CO₂. The power supply comes from renewable energy source (denatured alcohol) that does not require maintenance, it does not stain, it is clean for humans and is in harmony with nature. However, in case the bio-fireplace is used in a small room of 27mc (approx. 3x3 mt room) it is recommended to leave one or more doors open on the adjacent rooms or outside.

ETAN-K fuel:

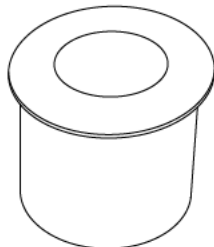
Bioethanol is the result of a process of fermentation and distillation of raw materials such as sugar cane, cereals etc.. These resulting alcohol is denatured and is the base product for ETAN-K, and high quality product, organic, a renewable source that does not pollute. ETAN-K comes in liquid form ready to be poured into the various burners with proper tools. It is always recommended to completely burn the fuel contained inside the burner, or at least to close it with the appropriate tools to avoid any evaporation of the product, that may cause alcoholic smells or may develop flammable gases. It is also very recommended to turn on the bio-fireplace right after charging them to avoid the development of flammable gases. Each combustion produces fumes but with proper air circulation (see minimum size room) does not create problems or concerns to users.

Circular burner operation:

Using the proper tool pour the fuel inside the burner, light the fire with a special lighter that has the flame at least 20cm apart for the handle (long steam lighter), do not lean over the burner when starting the fire, keeping a position that allows you to stay out of range of the burner. To turn-off the flame use the proper flame arrestor lid, with a pistil handle, designed to allow a grip from above in order to avoid any possible contact with the flame. It is recommended to let burn all the liquid inside of the burner. The combustion maximum duration is approximately 2h 40'. The lid pistil handle can be also used as a lighter-holder. Remember that it is absolutely forbidden to reload the burner when the flame is on.



Apollo flame arrestor lid



Apollo round burner

Instructions:

Apollo bioethanol fireplace operation is really easy, it does not need any permission to install, it requires no power outlets, chimneys, nor any masonry work. Maintenance is virtually zero, it does not produce neither smoke nor ash, it does not release odors, on the contrary, if purchased with the aromatherapy options it can offers really pleasant scents and sensations. The only required operation is to fill the burner with the desired amount of ETAN-K fuel and to light the fire with the recommended long steam lighter. All products have been tested and work properly with our Etan-K fuel, which they were regulated on. Therefore we are not responsible of evidence different from the ones we exposed, in case the fuel used is not the one described above. During the loading operations make sure that the liquid does not spill outside the burner, if it happens, it is necessary to dry and clean in order to avoid the spread of not controllable flames. For a safer operation it is better to place the bioethanol fireplace in ventilated areas.

Observations and

recommendations:

Apollo is an open fire, so an important requirement is to keep and follow a behavior allow with the product perfect operation, avoiding any risk for the user. There behaviors specified above and summarized below, partially allow a proper and not risky use. Make sure that flammable objects are at least 1mt away from the Apollo sound module. We also recommend adults to make sure that children or disabled people do not approach the fireplace when working, thus avoiding any overthrowing risk. Keep the Etan-k fuel stored in a safe place, away from heat, at temperatures not above 28° and away from children. When turning on the fireplace do not lean over the flame with your body. It is recommended to keep the distance permitted by the special recommended lighter. Never charge the fuel into the burner when it is in operation.

Maintenance and care:

to keep your speakers beautiful as long as possible, we warmly recommend doing maintenance at least once a year. When not in use, sound modules should be appropriately covered or stored away; heavy duty protective covers are available from AS. Please refer to the General Manual for appropriate instructions and note that any departure from our recommendations on care and cleaning, or any evidence of misuse or damages from ordinary wear and tear, will void all warranty claims.

